

November  
2013

HOME OF TRADITIONAL MUSIC  
**FREIGHT & SALVAGE**  
COFFEEHOUSE

CALENDAR  
OF EVENTS

2020 Addison Street • Berkeley, California • (510) 644-2020 • [www.freightandsalvage.org](http://www.freightandsalvage.org)

SUNDAY	MONDAY	TUESDAY	WEDNESDAY	THURSDAY	FRIDAY	SATURDAY
ALL SHOWS ARE GENERAL ADMISSION DOORS @ 7 PM, MUSIC @ 8 PM (UNLESS OTHERWISE NOTED) TICKET DISCOUNTS: YOUTH-HALF PRICE (AGES 25 & UNDER) SENIOR-\$2.00 OFF (AGES 65 & OVER) MEMBERS-\$2.00 OFF			 <div>LEARN TO <b>Play</b> AT THE <b>Freight</b></div> Fall II Classes begin the week of November 4 see back page for details		<b>Wake the Dead</b> Celtic all-star Grateful Dead jam band \$28.50 adv/ \$30.50 door Nov 1	<b>Iva Bittová</b> Czech avant-garde violinist, singer, and composer \$24.50 adv/ \$26.50 door Nov 2
<b>CartoonJazz Orchestra</b> big band renditions of classic cartoon melodies \$20.50/\$22.50 Nov 3	 <b>Sarah Elizabeth Campbell</b> <b>Benefit Concert</b> Blame Sally, Laurie Lewis, Tom Rozum, Kathy Kallick, Nina Gerber, Chris Webster, Stevie Coyle, Joe Craven, Cactus Bob & Prairie Flower, Marley's Ghost \$22.50/\$24.50 Nov 5	<b>The Sweetback Sisters</b> "Honky-Tonk for the modern-day cowboy and girl" \$16.50/\$18.50 Nov 6	<b>Tish Hinojosa &amp; Joel Rafael</b> great songs from two world-traveling troubadours \$18.50/\$20.50 Nov 7	<b>Garland Jeffreys</b> full-on rock and soulful blues from "socially conscious urban poet" \$24.50/\$26.50 Nov 8	<b>Holly Near</b> activist, singer, and songwriter extraordinaire \$28.50/\$30.50 Nov 9	
<b>International Body Music Festival</b> featuring <b>Theatre A Tempo,</b> <b>KeKeCa,</b> <b>Lior Shoov,</b> <b>San Francisco School Student Ensemble</b> 2pm showtime \$10.50/\$12.50 Nov 10	 Classical @ the Freight <b>The Haydn Project</b> Ben Simon, host \$8.50/\$10.50 Nov 11	<b>Freight Open Mic</b>  ground zero of the hootenany revival \$4.50/\$6.50 Nov 12	<b>Mary Gauthier</b> "songwriting that packs an emotional punch" with <b>The Handsome Family</b> \$26.50/\$28.50 Nov 13	<b>The Milk Carton Kids</b> "gorgeous contemporary folk" Thursday & Friday November 14 & 15 \$18.50/\$20.50 		<b>Banjo Extravaganza</b> with <b>Tony Trischka,</b> <b>Sammy Shelor,</b> <b>and Bill Evans</b> \$26.50/\$28.50 Nov 16
<b>The Band of Heathens</b> a potent americana punch with a dash of jamming psychedelia <b>Joe Fletcher</b> opens \$18.50/\$20.50 Nov 17	 <b>west coast songwriters Competition</b> professionally judged original songs contest 7:30 showtime \$6.50/\$8.50 Nov 18	<b>Slaid Cleaves</b> sharply observant folk, country, and rock \$18.50/\$20.50 Nov 19	<b>Tom Paxton</b> Lifetime Grammy winning traditional folksinger and composer \$26.50/\$28.50 Nov 20	<b>Maura O'Connell</b> Ireland's consummate singer \$28.50/\$30.50 Nov 21	<b>The Kathy Kallick Band</b> hot bluegrass and cool originals \$20.50/\$22.50 Nov 22	<b>Lucy Kaplansky</b> enchanting folk and roots rock singer-songwriter \$26.50/\$28.50 Nov 23
<b>Volti</b> contemporary choral from the leading edge \$26.50/\$28.50 Nov 24	<b>WeBe3</b> improvisational vocal trio featuring <b>Rhiannon, Joey Blake &amp; David Worm</b> \$18.50/\$20.50 Nov 25	<b>Freight Open Mic</b>  an adventure every time \$4.50/\$6.50 Nov 26	<b>Mads Tolling, John Santos &amp; Dan Zelman,</b> featuring <b>Out of Bounds</b> jazz, rock, and funk with string quartet and piano \$20.50/\$22.50 Nov 27	Can't make it to the Freight? Watch the show live, wherever you are.  concertwindow.com	<b>Too Much Coffee Man Opera</b> a zany, hilarious romantic tribute to the wonders of coffee \$20.50/\$22.50 Nov 29	<b>Laurie Lewis &amp; the Right Hands</b> revel in one of bluegrass and traditional music's finest \$22.50/\$24.50 Nov 30
<b>Irish Christmas in America</b> seasonal song, dance, and stories \$22.50/\$24.50 Dec 1	<b>Jazzschool End of Semester Student Performance</b> the next generation of jazz musicians take the Freight stage \$10.50/\$12.50 Dec 2	<b>Green Room Sessions</b> The Rock Bottom Boys Dirty Cello Jason Eady singer-songwriters playing in-the-round \$14.50/\$16.50 Dec 3	<b>A Winter's Night: Ensemble Galilei with Neal Conan</b> Celtic music, stories, and celestial imagery \$20.50/\$22.50 Dec 4	<b>Cris Williamson</b> annual off-beat holiday show from women's music pioneer \$24.50/\$26.50 Dec 5	 <b>SOLD OUT</b> <b>The Wailin' Jennys</b> angelic harmonies from the Canadian prairie Friday & Saturday, December 6 & 7 \$38.50/\$40.50	

**Patchwork Series Children's Show: The Hipwaders Saturday December 21 @ 11 am**  
 Classes/Workshop/Jams page 8 • December 8 & beyond page 7 • Ticketing info page 7

## About the Freight

The Freight & Salvage Coffeehouse (Berkeley Society for the Preservation of Traditional Music) is a nonprofit community arts organization dedicated to promoting the understanding and appreciation of traditional music—music rooted in and expressive of the great variety of regional, ethnic, and social cultures of peoples throughout the world. We are supported by your attendance, grants from the Alameda County ARTSFUND, Berkeley Civic Arts Program, The Foundation for Bluegrass Music, Bill Graham Supporting Foundation of the Jewish Community Endowment Fund, The William & Flora Hewlett Foundation, the Kanbar Charitable Trust, the Walter & Elise Haas Fund, the Edmund and Jeannik Littlefield Foundation, National Endowment for the Arts, Bernard Osher Foundation, Wells Fargo, musicians' benefit performances, volunteer efforts, and your generous tax deductible donations.

## Contact Info

2020 Addison Street, Berkeley, CA 94704

TELEPHONE: (510) 644-2020

E-MAIL: [folk@freightandsalvage.org](mailto:folk@freightandsalvage.org)

WEBSITE: [www.freightandsalvage.org](http://www.freightandsalvage.org)

## Board of Directors

**John Bidwell**  
Chair

**Russ Pollock**  
Secretary

**Polly Armstrong**

**Nancy Castille**

**Larry Chung**

**Kathleen Crandall**

**John Croizat**

**Suzanne Fox**

**Robin Flower**

**Peter Glazer**

**Barbara Highbie**

**Steve Meckfessel**  
Vice-Chair

**John Williamson**  
Treasurer

**Clyde Leland**

**Nate Levine**

**Ray Murray**

**Kerry Parker**

**Sarah Robertson**

**David Sawi**

**Linda Tillery**

**Austin Willacy**

## New Home Committee

Co-Chairs:

**Danny Carnahan**

**Warren Hellman (1934-2011)**

## Musicians Committee

**Darol Anger**  
**Duck Baker**  
**David Balakrishnan**  
**Greg Brown**  
**Bill Evans**  
**Kaila Flexer**  
**Mary Gibbons**  
**Ronnie Gilbert**  
**Sylvia Herold**  
**Patrick Landeza**

**Tony Marcus**  
**Mike Marshall**  
**John McCutcheon**  
**Libby McLaren**  
**Steve Seskin**  
**Richard Shindell**  
**Mayne Smith**  
**Eric Thompson**  
**Suzy Thompson**  
(partial listing)

## Staff

**Steve Baker**  
Executive Director

**Susan Lefkovich**  
Development Director

**Keith Mineo**  
Concessions Manager

**Bob Whitfield**  
Production Manager

**Celeste Kopel**  
Program Associate

**Clyde Crosswhite**  
Facilities Director

**Heather Herrington**  
Associate Director

**Andrea Hirsig**  
House Manager

**Michael Sawi**  
Webmaster

**René Gaumond**  
Associate Program Director

**Tim McGraw**  
Volunteer Coordinator

**Chuy Mendeola**  
Marketing Associate

## PERFORMER PROFILES: November 2013

### Wake the Dead Friday November 1

After more than a decade of solid success blending Celtic traditional music with the songs of the Grateful Dead, the world's first Celtic all-star Grateful Dead jam band is bringing its unique brand of musical alchemy to the Summer of Love, much to the delight of Deadheads, folkies, rockers, and lovers of Irish reels. The Jefferson Airplane's "White Rabbit," the Youngblood's "Get Together," Steven Stills' "Love the One You're With"—all receive the band's unique Celtic twist. "If you didn't know the songs, or hadn't read the credits," says Shaun Dale in *Cosmik Debris Magazine*, "it would be easy to get swept up in this music and imagine that some of the Garcia/Hunter material came from the pen of Turlough O'Carolan. Every segue works, and every song is beautiful."

The band features Maureen Brennan on harp, Cindy Browne on bass, Danny Carnahan on vocals, fiddle, octave mandolin, and guitar, Kevin Carr on fiddle, whistles and *uilleann* pipes, Sylvia Herold on vocals, Paul Kotapish on mandolin, guitar, and jaw harp, and Brian Rice on percussion. Tonight's show honors the Day of the Dead, and you may hear a few rarities, like the Brothers Johnson's "Cast My Spell on You." Be sure to wear a flower in your hair, and let Wake the Dead cast a Celtic spell on you.



### Iva Bittová Saturday November 2

When Iva Bittová takes the stage, she brings the audience into an entrancing musical universe. For the listener, the space she creates is "so intimate and personal you can almost feel her breath on your ears," according to *CMJ*. Performing solo, the Czech composer and improviser extends the range of both the human voice and her violin. Singing, bowing, plucking, and dancing simultaneously, she evokes everything from gypsy dances, opera, and avant-garde jazz to birdsong and animal cries. *New York Magazine* says, "Her sound is invigorating, urgent, and also soothing; it is a fusion of Old World and new-music sensibilities, infused with the spirit and language of Czech, Slovak, and Moravian music."

Her two most recent recordings demonstrate the expressive range of her work: this year's *Iva Bittová* is filled with delicate improvisations, and last year's *Zvon* features her voice, backed by the Prague Philharmonia, in orchestral arrangements of her compositions. She's collaborated with Bill Frisell, Bobby McFerrin, Bang on a Can All-Stars, and The Calder Quartet, won dozens of awards for her compositions, and performed all over the world. For a chance to hear a modern musical visionary, catch Iva Bittová at the Freight.



### CartoonJazz Orchestra Sunday November 3

The CartoonJazz Orchestra, led by multi-reed man and educator Jeff Sanford, covers the gamut of cartoon-inspired jazz, playing music by such innovative composers as Raymond Scott, John Kirby, and Danny Elfman. If you've ever watched Saturday morning television, if the name Bugs Bunny rings a bell, or Ren and Stimpy, or Homer Simpson, you know these zany, wildly colored compositions with their catchy melodies and hair-raising rhythmic shifts—they're embedded in your subconscious, etched into your television DNA.

Inspired in part by Don Byron's brilliant album, *Bug Music*, Jeff launched the CartoonJazz project at the Stanford Jazz Festival in 2003 after hunting through public archives and private collector libraries and tracking down many of the charts that Raymond Scott composed for his bands in the 1930s and '40s. The first performance was so successful that Jeff continued the project, with members of the band contributing new arrangements and expanding the repertoire.

Tonight's orchestra features Rolf Johnson, Eric Wayne, and John Worley on trumpets, Tony Davids, John Hunt, and Rick Walsh on trombones, Fil Lorenz, Dick Mathias, Doug Rowan, Hal Richards, and Jeff on woodwinds, and a rhythm section of Don Bennett, Randy Johnson, Andy Ostwald, Mark Rosengarden, and Benny Watson.

For a night of merrie melodies and looney tunes, catch the CartoonJazz Orchestra at the Freight.



### Sarah Elizabeth Campbell Benefit Concert Tuesday November 5

Sarah Elizabeth Campbell is an Austin, Texas songwriter—a songwriter's songwriter—with strong ties to the Bay Area. She spent twenty years with the folk and bluegrass band Fiddlesticks, she released her debut solo album *Little Tenderness* in 1990.

Her original songs have been covered by Jim Messina, Levon Helm and others. A longtime friend of the Freight, Sarah has collaborated with many formidable artists, many of whom will come together to help raise money to defer medical expenses and pay tribute to this respected and much loved artist who was recently diagnosed with liver cancer.

On the bill tonight are Blame Sally, Laurie Lewis, Tom Rozum, Kathy Kallick, Nina Gerber, Chris Webster, Stevie Coyle, Joe Craven, Cactus Bob & Prairie Flower, Marley's Ghost and other special guests.





## The Sweetback Sisters Wednesday November 6

With their infectious, rollicking country swing and their charisma hearkening back to the golden era of the silver screen cowgirl, the Sweetback Sisters are guaranteed to charm the boots off of one and all in their Freight debut. The Sisters' whimsical, Kitty Wells-inspired stage demeanor comes firmly wrapped around a core of solid musical chops, a deeply felt love for traditional country music styles, and a joy in playing together that is palpable.

Spotlighting numbers from their new CD, *Looking for a Fight*, the Sisters mix country classics and a handful of new songs, all topped with a healthy dash of irreverence and freewheeling enthusiasm. The group features Zara Bode and Emily Miller—that's them out front with the matching dresses and seamless harmonies—with drummer Stefan Amidon, electric guitarist Ryan Hommel, guitarist and fiddler Jesse Milnes, and Peter Bitenc on bass.



## Tish Hinojosa & Joel Rafael Thursday November 7

Tish Hinojosa's music crosses borders between cultures, languages and musical genres, moving with equal grace through folk, country, pop and latino styles.

She grew up listening to the traditional Mexican songs. In the late 1970's she discovered her love for heartfelt country music and began writing her own songs. She's worked with Linda Ronstadt, Joan Baez, Kris Kristofferson, Dwight Yoakam, Pete Seeger, Flaco Jimenez and Los Lobos. Her new album, *After the Fair*, includes originals and "Me Captivo Con Su Mirar (A Certain Softness)," a cover of a Paul McCartney song, sung in Spanish.

Joel Rafael has chronicled the world around him with songwriting rooted in folk tradition. Influenced by Woody Guthrie, Joel composed music for five sets of Guthrie lyrics given to him by Woody's daughter Nora, and two of his co-writes with Guthrie appear in *Every 100 Years—The Woody Guthrie Song Book*.

Joel first began performing in showcases and small clubs around Southern California. He formed a duo with Rosie Flores in 1978, enjoying standing-room-only crowds during their brief collaboration, and local promoters sought him as an opener for Rick Danko, Emmy Lou Harris, John Lee Hooker, Laura Nyro, and Taj Majal. He performs at festivals around the country.



## Garland Jeffreys Friday November 8

Garland Jeffreys has been called an edgy poet, the sound of New York, a confessional singer-songwriter, and an explorer of the links between rock, race, and rebellion whose work should be taught in schools. He's played with Bruce Springsteen, James Taylor, Dr. John and Levon Helm, and Bob Marley called him, "the only American who can really sing reggae." One of his best known songs, "Wild in the Streets" became a punk anthem after it was covered by the Circle Jerks in the early 1980s.

After a string of records in the 1970s and 80s he took a 13-year-long break from recording and touring until he released critically acclaimed *The King of In Between* in 2011. Garland's newest album, *Truth Serum*, is winning praise for its earthy, incisive lyrics and solid, bluesy rhythms. At 70 years old he's still a force on stage, blending recent songs with favorites from his formidable back catalog. For a chance to hear one of New York's finest rock 'n' roll poets, catch Garland Jeffreys at the Freight.



## Holly Near Saturday November 9

Holly Near has been making beautiful music and working for peace and justice for more than 40 years, and now she has a great new album—*Peace Becomes You*—and a talented touring band—John Buchino on piano, Jan Martinelli on bass, David Rokeach on drums, and Andre dos Santos Morgan on backup vocals—to help her put on a wonderful show at the Freight. She'll play some of her own compelling originals and dip into the songbooks of Irving Berlin and Gnarls Barkley, Hal David, and Ferron.

Born in Ukiah in 1949, Holly began her career acting on TV in shows like *Mod Squad*, *Room 222*, and *The Partridge Family*. In 1970, she appeared on Broadway in *Hair*, and after the Kent State shootings in May of that year, she wrote "It Could Have Been Me" and began touring in an anti-war road show. Since then, she's made a career of promoting peace, justice, and feminism, including LGBTQ rights. *Ms. Magazine* named her one of its Women of the Year. She's recorded more than 30 albums, and worked with Pete Seeger, Ronnie Gilbert, Arlo Guthrie, Mercedes Sosa, Bernice Johnson Reagon, Bonnie Raitt, Jackson Browne, Joan Baez, Phil Ochs, and Harry Belafonte. Her music has been a touchstone for more than one generation. She's a remarkable performer. Don't miss this chance to see her at the Freight.



### A CAPPELLA

November 25 WeBe3

### AMERICANA

November 17 The Band of Heathens

### BANJO ARTISTRY

November 16 *Banjo Extravaganza*

### BLUEGRASS/NEWGRASS/OLD TIME

November 22 The Kathy Kallick Band

November 30 Laurie Lewis & the Right Hands

December 13 Peter Rowan & Friends

December 26 & 27

The David Grisman  
Bluegrass Experience

### CAJUN

December 15 Dirk Powell & Cedric Watson

### CELTIC

December 19 *Legends of the Celtic Harp*

### CHORAL

November 24 Volti

### CLASSICAL

November 11 The Haydn Project

December 9 *The Great Fugue*

January 14 Berkeley High School  
Chamber Music Concert

### COMEDY

December 30 *The Big Fat Year End Kiss-Off XXI*

### FOLK

November 14 & 15

The Milk Carton Kids

November 20 Tom Paxton

November 21 Maura O'Connell

December 14 & 15

Judy Collins

### GENRE BENDING

November 1 Wake the Dead

November 2 Iva Bittová

November 27 Mads Tolling, John Santos  
& Dan Zemelman, featuring  
Out of Bounds

December 4 *A Winter's Night: Ensemble Galilei*  
with Neal Conan

### HAWAIIAN

December 11 *Patrick Landeza's Hawaiian*  
*Holiday Celebration*

January 31 George Kahumoku,  
Ledward Kaapana,  
Da 'Ukulele Boyz

### HONKY TONK

November 6 The Sweetback Sisters

### IRISH

December 1 *Irish Christmas in America*

### KIDS

December 21 The Hipwaders **11am**

### JAZZ

November 3 CartoonJazz Orchestra

December 2 Jazzschool End of Semester  
Student Performance  
January 11 Cheap Suit Serenaders

### KLEZMER

December 8 The Klezmatics

December 17 *Hardly Strictly Klezmer*

### SONGCRAFTERS

November 7 Tish Hinojosa & Joel Rafael

November 8 Garland Jeffreys

November 9 Holly Near

November 13 Mary Gauthier,  
The Handsome Family

November 19 Slaid Cleaves

November 23 Lucy Kaplansky

### SPECIAL EVENTS

November 5 *Sarah Elizabeth Campbell Benefit*

November 10 *International Body Music Festival*

November 20 *Too Much Coffee Man Opera*

December 21 *Freight Holiday Revue*

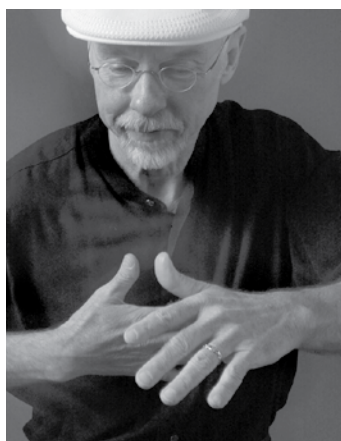
January 23-26 Esprit de Django et Stéphane Festival

## International Body Music Festival Sunday November 10, 2 pm

The International Body Music Festival comes to the Freight for a family matinee featuring a host of artists from the Bay Area and beyond—Brazil, Indonesia, Turkey, Israel, Canada, and the Canary Islands. Body music, which includes clapping, snapping, stepping, and many kinds of vocalizing, is music you can see, dance you can hear. The different styles of body music from around the world reveal other times and other cultures—they hold memories, cultural legacies, wisdom in rhythm, embodied in the body, internal, external, eternal.

On stage this afternoon are Theatre A Tempo from Quebec, KeKeCa from Turkey, Lior Shoov from Israel, the San Francisco School Student Ensemble, and excerpts from Body Tjak 13, a new collaboration featuring Corpusonic from Oakland, Çudamani from Bali, and Barbatuques from Brazil.

Body music is incredibly fun to watch, hear, and create for yourself. It's art for all ages, and we'll have a free with admission workshop—Hand Games from Around the World—in the lobby starting at 1 p.m. Come and join the fun Sunday afternoon at the Freight. It's good for the mind, the body, and the spirit! percussion, with bells, box, body and toys.



## Classical at the Freight The Haydn Project Monday November 11

Take four musicians, sixty-eight string quartets, and the genius of Franz Josef Haydn; stir vigorously and applaud wildly. Robin Sharp, Antoine van Dongen, Ben Simon, and Hannah Addario-Berry are the Haydn Project; this will be their first public performance, and with it the early fruits of their journey into these mostly brilliant, always inventive, enormously engaging works.

Classical at the Freight brings in some of the Bay Area's best classical musicians for an hour of outstanding chamber music in an informal, friendly atmosphere. San Francisco Chamber Orchestra music director Ben Simon hosts. There's no stuffiness, no mystification, just an invigorating evening with gifted musicians sharing the beauty and joy of this timeless art with new audiences of all ages.



## Mary Gauthier, with special guests The Handsome Family Wednesday November 13

In conversation and in public, Mary Gauthier comes off as a practical, no-nonsense woman. Which wouldn't seem unusual, except for the fact that her songs carry so much emotional punch, they can leave you staggering. She sings the stories of addicts, broken-hearted lovers, and forgotten souls with sharply observed, haunting detail and a smoky, beautifully weathered voice.

The 1999 release of Mary's widely acclaimed second album, *Drag Queens in Limousines*, gained her national recognition and had her touring coast to coast and performing at festivals from Strawberry to Newport. Since then, Mary has continued to write amazing songs covered by everyone from Blake Shelton to Boy George. Her newest album, *Live at Blue Rock*, is garnering rave reviews for gritty, heartfelt renditions of some of her best songs, including "I Drink" and "Drag Queens in Limousines." Joining Mary tonight are Jefferson Voorhees on vocals and percussion, and Annie Staninec on fiddle and vocals.

Dark, elemental, and mischievous, the music of the Handsome Family mines the deep vein of fatalism that runs through traditional American music. Playing a range of songs that veers from gothic country to love songs, the husband-wife duo of Brett and Rennie Sparks write much of their own material and perform it with strong, mellow vocals and deep harmonies, accompanying themselves on guitar, keyboards, bass, and banjo. *NME* says, "Each song is like an abridged Flannery O'Connor story, read aloud by Johnny Cash." While Brett and Rennie are known for their stage shows and deadpan humor onstage, their albums have also won great critical acclaim. The *New Yorker* says their latest album, *Wilderness*, is imbued with, "An antique sensibility, but a strangely pioneering one, too."



## The Milk Carton Kids Thursday & Friday, November 14 & 15

When Kenneth Pattengale and Joey Ryan ditched their solo careers to form minimalist duo The Milk Carton Kids, they had a plan: to give their music away in order to find their audience. It worked remarkably well. Their third album, the critically acclaimed *The Ash & Clay* was released this year and they're playing to packed houses and festival crowds across the U.S. and Europe.

What they have is wonderful songwriting, performed with just two voices and two acoustic guitars. *No Depression* says "The Ash & Clay is deceptively complex and haunting." This year saw them on *A Prairie Home Companion*, *Mountain Stage*, and at *Telluride Bluegrass Festival* and *Newport Folk Festival* doing what they do best: giving a respectful nod to their folk music predecessors and create music that feels new. And while their albums have garnered rave reviews, it's during their concerts that the duo really take flight, punctuating their mesmerizing songs with bits of wry humor. For two great nights of music the *San Francisco Chronicle* calls, "bittersweet and beautiful," don't miss The Milk Carton Kids at the Freight.

The Milk Carton Kids' first two albums are available for free download on their website.



## Banjo Extravaganza Saturday November 16



The 2nd Annual California Banjo Extravaganza lifts off at the Freight with five-string favorite Bill Evans bringing two banjo greats, Sammy Shelor and Tony Trischka, and a band of all-stars.

Sammy is a five-time winner of the International Bluegrass Music Association's award for Banjo Performer of the Year, as well as the winner of the Steve Martin Prize for Excellence in Banjo and Bluegrass, and leads the Lonesome River Band. Sammy has been a banjo innovator for his entire career. If you walk around at just about any gathering of banjo aficionados, you're likely to hear licks and phrases that he originated.

Tony just might be the most influential banjo player in the roots music world, he's been cooking up banjo magic for decades. He's won several IBMA awards and an Independent Music Award, as well as earning a Grammy nomination. In addition to his more than 30 albums, he's worked on films and documentaries, appeared on *A Prairie Home Companion*, *Mountain Stage*, and *Late Night with David Letterman*, and published two books.

Bill is also an author—his *Banjo for Dummies* is the best-selling banjo instructional book in the world—and, like Sammy and Tony, he's a banjo life force. His latest album, *In Good Company*, topped international folk and bluegrass charts. Bill has recently played at the Freight with Melody Walker & Jacob Groopman, David Bromberg, the Hard Road Trio, and the Jazzschool Bluegrass Ensemble, which he directs.

Mandolinist John Reischman, guitarist Jim Nunally, fiddler Chad Manning, and bassist Sharon Gilchrist will join Sammy, Tony, and Bill to make some unforgettable music tonight at the Freight!

## Band of Heathens, Joe Fletcher opens Sunday November 17



At some point, you've heard someone say about a band, "you've got to see them live." The Band of Heathens is one of those bands. The Austin-based outfit has put out four albums over the last few years and have garnered a pair of Americana Music Association award nominations. But you've got to see them live. "One of the fun things about playing in this band is that we don't just play folk music or just play country music or just play R&B. We really kind of mash it all together and have fun with it," says guitarist and singer Gordy Quist.

They just released fourth album, *Sunday Morning Record*. "We set out to make a record that chronicled the journey of the band through a really difficult and uncertain time," says singer and guitarist Ed Jurdi. The band also features drummer Richard Millsap, bassist Ryan Bowman, and keyboard player Ryan Nealon.

With a sound akin to The Band, The Jayhawks, Little Feat, The Black Crowes and even some funky Dr. John thrown in for good measure, their music is hard to categorize, but easy to love.

Ritmüller is the Freight's official piano and R.KASSMAN in Berkeley is our piano purveyor.



## Slaid Cleaves Tuesday November 19

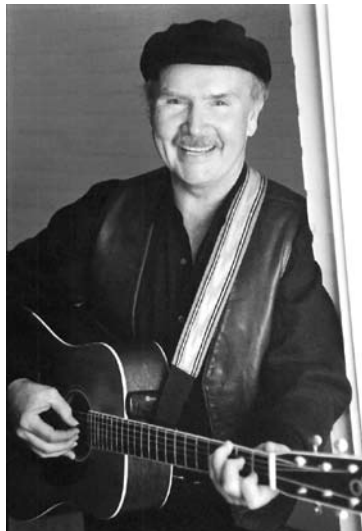
Slaid Cleaves has a name that perfectly matches his music and voice. It's terse, doesn't have soft vowels, and is more verb than noun. He has a gift for writing incisive lyrics where every word counts. Great stories delivered with a master poet's precision and the conviction of a tent preacher. As to the details of Slaid's own story, he sums it up with inimitable brevity: "Grew up in Maine. Lives in Texas. Writes songs. Makes Records. Travels around. Tries to be good." Granted, there's a whole lot of history and detail that could be shoehorned into that most minimal of bios. Cleaves majored in English and philosophy at Tufts University in his native New England; learned guitar listening to the likes of Woody Guthrie, Bruce Springsteen, Hank Williams, and Carl Perkins; spent a summer in Ireland busking on the streets in Cork where he decided to have a go at the music life. That life began with playing bars in Maine, but Slaid soon made his way to music-loving Austin. In 1992 he won the Kerrville Folk Festival's New Folk competition, joining the company of previous winners Lyle Lovett, Robert Earl Keen, and Steve Earle. He released his first album *No Angel Knows* in 1996, with a follow-up album *Brokedown* in 2000—which *The Austin Chronicle* called "the first great Texas album of the 21st century." In 2004, Slaid offered up the critically acclaimed *Wishbone*, followed by *Unsung*, *Everything You Love Will Be Taken Away*, and his latest, *Still Fighting the War*. All that living, writing songs, making records, traveling around and trying to be good has, par for his course, made Slaid Cleaves even better.



## Tom Paxton Wednesday November 20

Consummate folksinger, children's book author, and composer, Tom Paxton looks at life's ups and downs, sometimes poignantly, sometimes in hilarious detail. A central figure in folk music since arriving in Greenwich Village in the early 1960s, via Chicago and Oklahoma, Tom has been a primary influence on four distinct generations of folk musicians. Whether addressing issues of injustice and inhumanity, having a chuckle at the absurdities of modern culture, or celebrating the bonds of family, friends, and community, Tom's songs—"Ramblin' Boy," "The Last Thing on My Mind," "Bottle of Wine," and "What Did You Learn in School Today," to name but a few—endure. Pete Seeger said of Tom's music, "These songs have a way of sneaking up on you. You may find yourself humming them, whistling them, and singing a verse to a friend. Like the songs of Woody Guthrie, they're becoming part of America." Those songs have been recorded by dozens of artists, including Willie Nelson, Plácido Domingo, and Johnny Cash.

In addition to releasing a CD of new songs, *Comedians & Angels*, Tom recently saw his classic children's song, "The Marvelous Toy," published by Peter Yarrow Books as a beautifully illustrated book. Tom was honored with a Lifetime Achievement Award from the Recording Academy at the 2009 Grammy Awards. For a chance to hear a living folk legend, catch Tom Paxton at the Freight.



## Maura O'Connell Thursday November 21

Some voices have such a unique sound and power that once you've heard them you always know them. Maura O'Connell has a voice like that, a rich contralto to make you stop and listen. But along with that gift, Maura also brings a level of musical intelligence and taste that separates her from those singers whose primary virtue is a great set of pipes.

"I'm a song interpreter," says Maura, "A good song is a good song. That's why I sing songs from such diverse corners of the globe and from such diverse corners of the poetic spectrum." Her singing has taken her from her native Ireland, where she grew up singing along to her mother's collection of parlor songs and light opera records, to a stint with traditional group De Dannan. She moved to Nashville when she fell in love with progressive American roots music. Known as a songwriter's singer, her collaborators include Béla Fleck, Dolly Parton, Alison Krauss, Edgar Meyer, Tim O'Brien, and her long-time producer Jerry Douglas. Maura has released eleven critically acclaimed albums, including 2009's *Naked With Friends*, which was nominated for a Grammy.

Equally comfortable singing a *cappella* as with a band—and in either English or Irish—she'll be accompanied tonight by guitarist John Mock and bassist Don Johnson.

For a thrilling night of vocal artistry, don't miss Maura O'Connell at the Freight.



## The Kathy Kallick Band Friday November 22



Kathy Kallick is at it again, cooking up a bluegrass storm on stage. *Singout! Magazine* calls her "one of the best songwriters in bluegrass and acoustic music, always coming up with interesting, sometimes playful, always sure-handed songs" and praises her band as "a wonderful combination of youth and experience." Annie Staninec plays fiddle and clawhammer banjo, Tom Bekeney plays mandolin and fiddle, Greg Booth plays dobro and banjo, Cary Black plays bass, and together with Kathy on guitar and vocals, the band sizzles and swings on compelling originals and bluegrass classics.

Kathy co-founded the groundbreaking bluegrass quintet the Good Ol' Persons in 1975. She's won a Grammy and two awards from the International Bluegrass Music Association, and recorded 17 albums, including a bluegrass gospel collection, *Count Your Blessings*, and *Time*, which features four originals, plus fresh interpretations of songs learned from Bill Monroe, Vern & Ray, the Delmore Brothers, Rose Maddox & Mike Seeger, Fiddlin' Arthur Smith, and Kathy's mother. For an evening of hot bluegrass and cool originals, catch the Kathy Kallick Band at the Freight.

## Lucy Kaplansky Saturday November 23



Lucy Kaplansky has a voice you won't forget. Clear, pure, and full of tender feeling, it cuts through the noise of the world and pierces you in the heart.

Lucy was a hip kid making the singer-songwriter scene in New York with Suzanne Vega, Cliff Eberhardt, and Bill Morrissey. It was easy, the *New York Times* said, "to predict stardom for her." She changed directions, but music kept calling her back, in the form of friends like Shawn Colvin, Nancy Griffith, John Gorka who wanted her to sing on their albums. She went on to record half a dozen outstanding solo albums and she also collaborated on two projects, *Cry, Cry, Cry* with Dar Williams and Richard Shindell, and *Red Horse* with John Gorka and Eliza Gilkyson. Her latest album, *Reunion*, includes collaborators Buddy Miller, Richard Shindell, John Gorka, Eliza Gilkyson, and producer/drummer Ben Wittman.

Her show tonight promises a rich mix of folk, roots rock, and country, all delivered with great warmth, humor, and intelligence, in that unforgettable voice.

**The Freight's sound system** is composed of speakers and amplifiers exclusively designed and installed by Meyer Sound Labs of Berkeley. We thank the folks at Meyer Sound for the generous support and assistance they provide year after year. Their contribution has been indispensable in establishing the Freight as a premier listening room.



## Volti Sunday November 24

Attending a Volti concert is like visiting an art gallery, stimulating the mind, the imagination, and the heart. Named for the Italian musical instruction *volti subito*—meaning “turn the page quickly, look ahead!”—this 20-piece professional chamber choir has explored the nexus between poetry and sound since 1979. They’re dedicated to the discovery, creation, and performance of new music, and they’ve commissioned more than 75 new works from emerging and established composers. Under the direction of founder Robert Geary they incorporate unusual vocal techniques not usually heard in traditional choral music.

Volti celebrates their 35th season with a look back at the group’s roots in the music of Benjamin Britten in commemoration of Britten’s 100th birthday, and a look forward with a world premiere by San Francisco composer Mark Winges and pieces by rising young composers Sarah Kirkland Snider and Forrest Pierce.

Come hear the leading edge of 21st century vocal music when Volti plays the Freight.



## WeBe3 (Rhiannon, Joey Blake, & David Worm) Monday November 25

Three extraordinary Bay Area vocalists join forces for an evening of stunning vocal fireworks. Rhiannon, Joey Blake, and David Worm are all original members of Bobby McFerrin’s Voicestra and have sung with the award-winning a cappella ensemble SoVoSo. The *Los Angeles Times* praised the group for “expanding the vision of what the human voice is capable of, individually and collectively.”

Rhiannon, who sings lead melodies, has released five albums on her own label, and has collaborated with Ruth Zaporah, Brenda Wey, and the dance company ODC. She is also a teacher with a deep interest in the connection between music and healing.

Joey, who provides the rich bass lines, is also a producer, recording engineer, composer, dancer, choir director, and instrumentalist. He has recorded with Kenny Loggins and Mickey Hart and served on the faculty of both the Jazzschool in Berkeley and the Berklee College of Music in Boston.

David, who creates the percussion effects, has more than fifty recording credits as a session singer, vocal percussionist, and composer. He has taught improvisational singing and vocal production in Europe and America, including at the Omega Institute in New York and the Esalen Institute in Big Sur.



## Mads Tolling, John Santos & Dan Zemelman, featuring Out of Bounds Wednesday November 27

Three of the Bay Area’s finest jazz musicians—violinist Mads Tolling, percussionist John Santos, and pianist Dan Zemelman—join forces to play music from all over the world. The trio will explore Afro-Cuban rhythms, the folk traditions of Scandinavia, and the compositional genius of Thelonious Monk. Sharing the bill is string quartet Out of Bounds, grooving and swinging to music by such artists as Väsen, Turtle Island Quartet, and Tower of Power. The performance will conclude with all the musicians playing a few pieces together to make this a night to remember!

Mads has won two Grammys as part of Turtle Island Quartet and toured for many years with bassist Stanley Clarke. As leader of the Mads Tolling Quartet, he released *The Playmaker*, featuring Stanley Clarke, Russell Ferrante, and Stefon Harris, and *Celebrating Jean-Luc Ponty—Live at Yoshi’s*.

John is a five-time Grammy nominee and one of the foremost bandleaders, composers, producers, percussionists, and educators in the field of Afro-Latin music. He currently teaches at the College of San Mateo and Berkeley’s Jazzschool. He has worked with Tito Puente, Dizzy Gillespie, Max Roach, Cachao, Eddie Palmieri, Omar Sosa, and McCoy Tyner, and currently directs the John Santos Sextet.

Dan is a jazz innovator who studied at the University of Wisconsin, toured India and Sri Lanka as a Jazz Ambassador, contributed to *Face to Face*, the final album of blues legend John Lee Hooker.

Out of Bounds features Mads on violin, Turkish violin virtuoso Hande Erdem, Grammy-nominated violist Emily Onderdonk, and Grammy-nominated cellist Joseph Hebert. Together, they play a mix of jazz, rock, funk, and fiddle music, improvising on clever covers and playing their own exciting originals.



## Too Much Coffee Man Opera Friday November 29



If you’re feeling a bit sluggish after the Thanksgiving festivities, try a little theatrical caffeine to get you going again.

*Too Much Coffee Man Opera* is the first of what is now called Gonzo Opera. It’s real opera—not parody or pastiche—which allows singers to do all the wonderful things they can, but using wild and crazy plots you’d never expect in traditional opera. It’s an hour-long one-act hilarious, romantic, and fantastical tribute to the wonders of coffee.

With music by Emmy-winning composer Daniel Steven Crafts and based on the comic superhero by Shannon Wheeler, *Too Much Coffee Man Opera* premiered in Portland, Oregon in 2006 and has since been staged around the country.

The production features singing actors Michael Mendelsohn, Erin Neff, and Keith Perry, musical director and pianist Charles Worth, Michael Jordin on clarinet, and Carla Kaufman on bass.

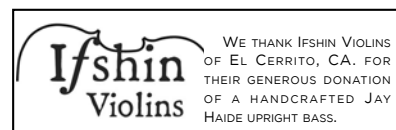
For an off-beat, unexpected, and amusing theatrical experience, catch *Too Much Coffee Man Opera* at the Freight.

## Laurie Lewis & the Right Hands Saturday November 30



It doesn’t get much better than Laurie Lewis & the Right Hands. She’s Berkeley’s own, she’s won the International Bluegrass Music Association award for Female Vocalist of the Year multiple times, and a Grammy for her contribution to *True Life Blues: the Songs of Bill Monroe*, and her Right Hands are about as talented as a band has a right to be. Laurie sings and plays fiddle and she may strum the guitar now and then. Tom Rozum sings, swaps jokes and plays mandolin, Chad Manning plays fiddle, Patrick Sauber plays banjo, and Sharon Gilchrist plays bass. Truth is, they all play a lot of things. If you’ve never heard them before, you need to hear them as soon as you can. If you’ve already heard them, chances are you want to hear them again.

Laurie is a key figure in bluegrass, traditional, and folk music circles. The lineup of the Right Hands changes now and then, but the caliber of musicianship always remains high. They’ll make you laugh, they’ll bring a tear to your eye—don’t miss Laurie Lewis and her Right Hands in their musical home at the Freight.



WE THANK IFSHIN VIOLINS OF EL CERRITO, CA, FOR THEIR GENEROUS DONATION OF A HANDCRAFTED JAY HAIDE UPRIGHT BASS.



## World Music Treasures

a series of musical riches representing regional & ethnic traditions from all over the world, made possible with the generous support of the Walter & Elise Haas Fund, the Kanbar Charitable Trust, and The Bernard Osher Foundation

**November 2—Iva Bittová**  
Czech avant-garde violinist, singer, and composer

**November 10—International Body Music Festival** (2 pm showtime)  
clapping, snapping, stepping and vocalizing from around the world

**November 21—Maura O'Connell**  
riveting cross-genre singer

**December 1—Irish Christmas in America**  
seasonal song, dance, and stories

**December 11—Patrick Landeza's Hawaiian Holiday Celebration**  
featuring Waipuna, LT Smooth, David Kamakahi, Bill Griffin, Makalwa

**December 15—Dirk Powell & Cedric Watson**  
old-time Appalachian tunes and Cajun-Creole songs from Louisiana

**December 17—Hardly Strictly Klezmer**  
Red Hot Chachkas, Glenn Hartman & the Klezmer Playboys, and Rob Reich & Ben Goldberg

**December 19—Legends of the Celtic Harp: A Winter Gift**  
featuring Patrick Ball, Lisa Lynn & Aryeh Frankfurter

## Contact Information

2020 Addison Street Berkeley, CA 94704  
(510) 644-2020  
folk@freightandsalvage.org  
www.freightandsalvage.org

## Advance Tickets

### Freight Box Office:

During all performances & daily 12:30–7 pm

**Mail order:** Send check and SASE at least 10 days before show date.

### Ticket Discounts:

**Member Price:** \$2.00 per ticket

**Youth Price:** half-price (25 & under)

**Senior Price:** \$2.00 per ticket (65 & over)

**Internet:** (service charges apply)

www.freightandsalvage.org

**Charge by phone:** (service charges apply)

Freight Box office (510) 859-1120

**Priority seating with advance tickets when the doors open.**

## Accessibility

The Freight is accessible to people with disabilities. We provide free assisted-listening devices upon request. In order to best accommodate your needs, we request that

you call or email us at least 24 hours prior to the performance with special seating requests. We can only promise 1+companion seat for busy or sold-out shows. Special seating will be held until 8:30 pm for busy or sold-out shows.

## Visit the Freight

**BART:** The Downtown Berkeley station on Shattuck Avenue is around the corner.

**AC Transit** routes F, FS, 1, 1R, 7, 12, 18, 25A, 25B, 49A, 49B, 51B, 52, 65, 67, 88, 604, 605, stop nearby.

### Parking in Downtown Berkeley

**Allston Way Garage:** 2061 Allston Way, between Shattuck & Milvia (Enter on Center Street) is one block south. Park for \$5 on weekdays if you enter after 6 pm or all day Saturday or Sunday.

**Center Street Garage:** 2025 Center Street, between Shattuck and Milvia is next door to the Freight. (Enter on Addison Street.) Park for \$5 if you enter the garage after 5 pm.

**BikeStation:** 2208 Shattuck Street, Secure bike parking 7 am - 9 pm, through BikeLink, 24 hrs a day, 7 days a week.

# December 8th & beyond

(see front cover for November)

SUNDAY	MONDAY	TUESDAY	WEDNESDAY	THURSDAY	FRIDAY	SATURDAY
<p><b>The Klezmatics</b> Grammy-winning Jewish roots band</p> <p>\$26.50/\$28.50 Dec 8</p>	<p> San Francisco Chamber Orchestra presents <b>Classical @ the Freight</b> <b>The Great Fugue</b></p> <p>\$8.50/\$10.50 Dec 9</p>	<p><b>Freight Open Mic</b> pay your dues, play &amp; schmooze</p> <p></p> <p>\$4.50/\$6.50 Dec 10</p>	<p><b>Patrick Landeza's Hawaiian Holiday Celebration</b> Waipuna, LT Smooth David Kamakahi, Bill Griffin, Makaiwa</p> <p>\$24.50/\$26.50 Dec 11</p>	<p><b>Christmas Jug Band</b> folk-skiffle-swing holiday hijinks with Maria Muldaur</p> <p>\$22.50/\$24.50 Dec 12</p>	<p><b>Peter Rowan &amp; Friends</b> with Nina Gerber, The Rowan Brothers, and more</p> <p>\$24.50/\$26.50 Dec 13</p>	<p><b>Judy Collins</b> inspiring contemporary and folk music legend Ari Hest opens</p> <p>\$52.50/\$56.50 Dec 14</p>
<p><b>Judy Collins</b> Ari Hest opens 2 pm showtime</p> <p>\$52.50/\$56.50 Dec 15</p>	<p><b>West Coast Songwriters Competition</b> professionally judged original songs contest 7:30 pm</p> <p>\$6.50/\$8.50 Dec 16</p>	<p><b>Hardly Strictly Klezmer</b> Red Hot Chachkas Glenn Hartman &amp; the Klezmer Playboys Rob Reich &amp; Ben Goldberg</p> <p>\$20.50/\$22.50 Dec 17</p>	<p><b>Larry Hanks &amp; Deborah Robins</b> traditional folk duo's CD release for <i>The Wheel of Time</i></p> <p>\$18.50/\$20.50 Dec 18</p>	<p><b>Legends of the Celtic Harp</b> featuring Patrick Ball, Lisa Lynn &amp; Aryeh Frankfurter</p> <p>\$22.50/\$24.50 Dec 19</p>	<p><b>Robbie Fulks</b> alternative country, classic honky-tonky, and offbeat roots rock</p> <p>\$20.50/\$22.50 Dec 20</p>	<p><b>Freight Holiday Revue</b> hosted by Laurie Lewis</p> <p>\$20.50/\$22.50 Dec 21</p>
<p><b>Freight Open Mic</b> the Freight stage awaits you</p> <p></p> <p>\$4.50/\$6.50 Dec 23</p>	<p><b>Play at the Freight</b> LEARN TO AT THE Freight</p> <p>Fall II Classes begin the week of November 4 Winter Classes begin the week of January 13</p>			<p><b>The David Grisman Bluegrass Experience</b> w/ Jim Nunally, Keith Little, Chad Manning &amp; Sam Grisman Friday &amp; Saturday, December 26 &amp; 27 \$36.50/\$38.50</p> <p></p>		
<p><b>The Big Fat Year End Kiss Off Comedy Show XXI</b> Will Durst, Debi Durst, Johnny Steele, Michael Bossier, Mari Magaloni, Arthur Gaus</p> <p>\$20.50/\$22.50 Dec 30</p>	<p><b>New Year's Eve Bluegrass Revue</b> High Country plus Dix Bruce &amp; Jim Nunally</p> <p>\$28.50/\$30.50 Dec 31</p>	<p><b>JANUARY 2014</b> 3 Eve Decker &amp; Friends—\$19 5 Geoff Muldaur—\$25 8 Suzy Thompson's <i>Musical Journey</i>—\$21 9 Theodore Bikel—\$34 10 Cheap Suit Serenaders—\$26.50 11 John McCutcheon—\$28.50 12 Steve Seskin, Craig Carothers, Don Henry—\$23 13 <i>Classical at the Freight</i>—\$9 14 Berkeley HS Chamber Concert—\$15 17 Red Molly—\$20.50 19 Stefan Grossman—\$28 21 Chuck Brodsky, Tim Flannery—\$21 22 Keith Little &amp; LittleBand—\$19 <b>Esprit de Django et Stéphane Festival: January 23-26</b> 23 Hot Club of Cowtown—\$25 24 David Grisman Sextet—\$37 25 Turtle Island Quartet—\$27 26 George Cole—\$25</p>				
<p><b>FEBRUARY</b> 2 Finest Kind—\$19 6 Talk of da Town—\$23 8 John Gorka—\$25 27 Berkeley Middle School Jazz Night—\$21 30 Corinne West—\$20 31 George Kahumoku, Ledward Kaapana, Da 'Ukulele Boyz—\$33</p>						

- 27 Berkeley Middle School Jazz Night—\$21  
30 Corinne West—\$20  
31 George Kahumoku, Ledward Kaapana, Da' Ukulele Boyz—\$33

## FEBRUARY

- 2 Finest Kind—\$19  
6 Talk of da Town—\$23  
8 John Gorka—\$25  
9 Dry Branch Fire Squad, Lindsay Lou & the Flatbellys—\$19  
12 Hot Tuna Acoustic—\$43  
13 The Duhks—\$18.50  
20 Sylvia Tyson, Cindy Cashdollar, Scarlet Rivera—\$24  
21 Mike Amaral's California Beach Boys Tribute Band—\$18  
22 Carlos Núñez—\$21  
27 Birds of Chicago—\$15

## Patchwork Children's Series

**The Hipwaders**  
Saturday December 21 at 11am  
\$8 advance/ \$10 door

www.freightandsalvage.org/kids-freight



**Berkeley Society for the  
Preservation of Traditional Music**  
2020 Addison Street  
Berkeley, CA 94704  
[www.freightandsalvage.org](http://www.freightandsalvage.org)

HOME OF TRADITIONAL MUSIC  
**FREIGHT & SALVAGE**  
COFFEEHOUSE

VOLUME 46 • NUMBER 11  
November 2013



**Mary Gauthier  
with  
The Handsome Family  
Wednesday  
November 13**



NONPROFIT  
U.S. POSTAGE  
**PAID**  
OAKLAND, CA  
PERMIT  
NO. 3729

Whether it's through a performance or a class,  
the Freight presents opportunities for you to explore and  
experience the excitement of being part of a living tradition

Please make a tax-deductible gift today and support the Freight

TO DONATE GO TO [WWW.FREIGHTANDSALVAGE.ORG](http://WWW.FREIGHTANDSALVAGE.ORG)  
OR CALL (510) 859-1120

## Learn to Play: Classes, Jams, Workshops

Fall II Series Classes run from the week of November 4th until December 21st. There are no classes the week of Thanksgiving. The fee for six 75-minute classes is \$130. \$10 early-bird discount applies to class registrations received before midnight Monday, October 28.

### **Mondays starting November 4**

**Introduction to Mountain Dulcimer** w/ DJ Hamouris (5:30-6:45)  
**Beginning Clawhammer Banjo** w/ Allegra Yellin (7:00-8:15)  
**Beginning Old Time & Bluegrass Mandolin** w/ Eric Thompson (7-8:15)  
**Beginning Blues Harmonica** w/ David Mathews (7-8:15)  
**Upright Bass for Novices\*** w/ Chuck Ervin (7-8:15)  
**Introduction to Swing Guitar\*** w/ Sylvia Herold (7-8:15)  
**Intermediate Old Time & Bluegrass Mandolin** w/ Eric Thompson (8:30-9:45)  
**Folk Song Repertoire** w/ Shay Black (8:30-9:45)  
**Swing Standards for Bass\*** w/ Chuck Ervin (8:30-9:45)  
**Swing Repertoire for Singing Guitarists\*** w/ Sylvia Herold (8:30-9:45)  
*\*no class on November 11, make up class on November 25*

### **Tuesdays starting November 5**

**Harmony Singing** w/ Avram Siegel (7-8:15)  
**Songwriting** w/ Jim Bruno (7-8:15)  
**Bluegrass Jam Class: Beyond the Basics** w/ Bill Evans (7-8:15)  
**Clawhammer Banjo Slow Repertoire** w/ Evie Ladin (7-8:15)  
**Clawhammer Banjo Intermediate Repertoire** w/ Evie Ladin (8:30-9:45)

## **WORKSHOPS**

**Instant Chorus** w/ Betsy Blakeslee  
Saturdays November 2 & December 7, 3:30-5:30 pm, (\$20)

**California Banjo Extravaganza Mini-Camp**  
w/ Tony Trischka, Sammy Shelor & Bill Evans  
Saturday November 16, 12-4:30 pm, (\$75)

**Music in a Circle** w/ Shira Kammen  
Saturday November 16, 2:30-5 pm, (\$20)

**Old Time Harmony Singing** w/ Evie Ladin  
Sunday December 1, 1:00-2:30 pm, (\$20)

**Fingerpicking Guitar Techniques** w/ Stefan Grossman  
Sunday January 19, 2014, 1-4 pm, (\$75, \$85 after January 5)

### **Wednesdays starting November 6**

**Guitar II** w/ Gabriel Olin (5:30-6:45)  
**Introduction to Flatpicking Guitar** w/ Eric Thompson (7-8:15)  
**Beginning Music Theory/Sight-Singing** w/ Ken Malucelli (7-8:15)  
**Introduction to Fingerstyle Guitar** w/ Pete Madsen (7-8:15)  
**Beginning 'Ukulele\*\*** w/ Hiram Bell (7-8:15) *starts November 13*  
**Guitar I** w/ Gabriel Olin (7-8:15)  
**Fingerstyle Blues Variations** w/ Pete Madsen (8:30-9:45)  
**Intermediate 'Ukulele\*\*** w/ Hiram Bell (8:30-9:45) *starts November 13*  
**Guitar III** w/ Gabriel Olin (8:30-9:45)  
**Intermediate/Advanced Guitar Flatpicking** w/ Eric Thompson (8:30-9:45)  
*\*\*class starts on November 13*

### **Thursdays starting November 7**

**Beginning 'Ukulele** w/ Hiram Bell (5:30-6:45)  
**Fiddle Repertoire with Anatomy of a Fiddle Tune** w/ Erik Hoffman (7-8:15)  
**Bottleneck Slide Guitar** w/ Pete Madsen (7-8:15)  
**Advanced 'Ukulele** w/ Hiram Bell (7-8:15)  
**Beginning Fiddle** w/ Erik Hoffman (8:30-9:45)  
**Introduction to Fingerstyle Blues** w/ Pete Madsen (8:30-9:45)  
**Women's Singing Circle** w/Tamsen Fynn (8:30-9:45)

### **Saturdays starting November 9**

**Women's Singing Circle** w/Tamsen Fynn (6-7:30)

## **JAMS**

**Beyond Bluegrass Slow Jam** w/ Ran Bush  
1st & 3rd Sundays, November 3 & 17, 2:00-5:00 pm (\$14)

**Bluegrass Slow Jam** w/ Ran Bush  
2nd & 4th Sundays, November 10 & 24, 2:00-5:00 pm (\$14)

**Buzzy's Juke Joint Blues Jam** w/ Pete Madsen  
Saturdays 1:00-3:00 pm (\$15), November 2, 9, 16, 23 & 30